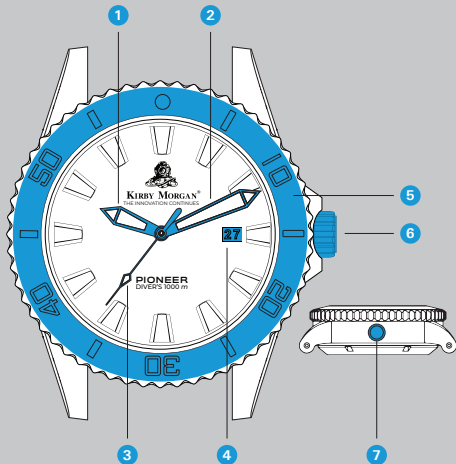




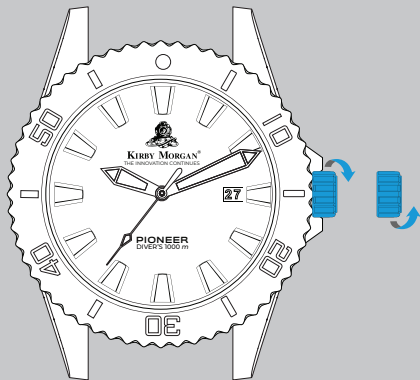
**PIONEER**  
INSTRUCTIONS AND WARRANTY

## OVERVIEW

- 1 Hour hand
- 2 Minute hand
- 3 Seconds hand
- 4 Date window
- 5 Unidirectional rotatable graduated bezel in ceramic
- 6 Winding crown
- 7 Automatic helium release



## WEARING THE WATCH FOR THE FIRST TIME



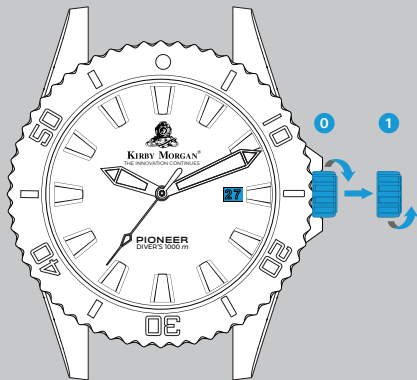
It may be necessary to manually wind your automatic watch, on occasion, including right out of the box, or if it rests for more than 40 hours without wear.

Unscrew the crown counter-clockwise until it spins freely.

Advance the crown clockwise 20-30 times.

**Push the crown back into the case**, turning it clockwise while applying pressure towards the case, until snug.

## SETTING THE DATE

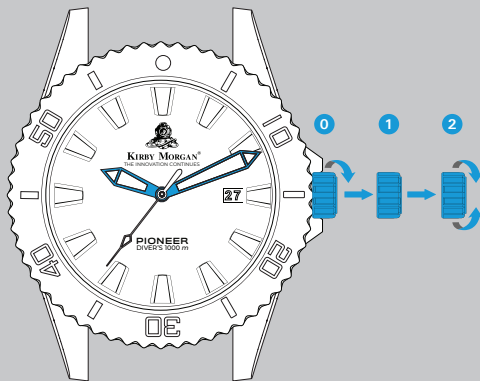


Unscrew the crown counter-clockwise until it spins freely (*position 0*), then pull the crown out to the first click (*position 1*).

Turn the crown clockwise to advance the date (*position 1*).

**Push the crown back into the case.** Turn the crown clockwise while applying pressure towards the case, until snug (*position 0*).

## SETTING THE TIME

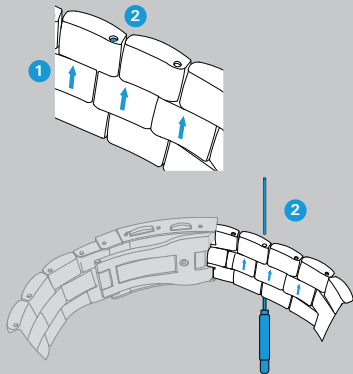


Unscrew the crown counter-clockwise until it spins freely (*position 0*), then pull the crown out to the second click (*position 2*).

Turn the crown clockwise (or counter-clockwise) to the appropriate time (*position 2*).

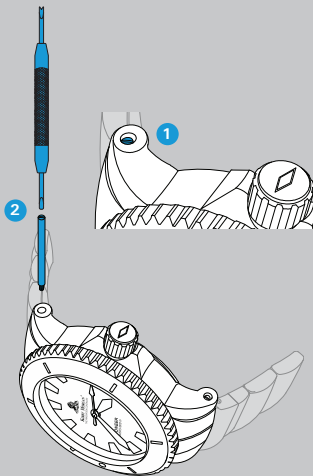
**Push the crown back into the case.** Turn the crown clockwise while applying pressure towards the case, until snug (*position 0*).

## HOW TO REMOVE THE LINKS



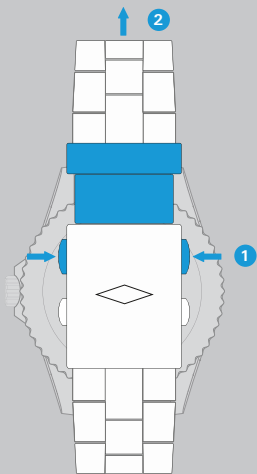
- 1 There are arrows on the inside links of the metal bracelet. These are the links that are removable.
- 2 Notice the small holes on the edge of the metal bracelet. To remove a link you will need to push out the small “hairpin” style pins using a pin pusher or similar tool—be careful not to scratch the metal. Press the “hairpin” style pins out in the direction of the arrow.
- 3 Reinstall the “hairpin” style pins in the reverse order.

## HOW TO CHANGE THE BANDS



- 1 Locate the small holes and set screws at the end of the watch lugs on the crown side, this is where the band attaches to the watch.
- 2 The set screw is 22.5mm long and goes from one side of the watch lugs to the other. Use the provided screwdriver to unscrew the set screw until the threads fully release—you should feel less tension on the set screw. The set screw will not be fully removed, at this point pull the screw all of the way out.
- 3 To install a new strap, reverse the order of the strap removal procedures. **DO NOT OVER TIGHTEN THE SET SCREWS**, the screws only need to be snug.

## WETSUIT EXTENDER



Your watch is equipped with a ratchet style wetsuit extension. This will allow you to determine the amount of extension needed with the push of a button.

- 1 Locate the larger buttons—one on each side of the buckle across from each other. Simultaneously push the buttons. While the buttons are held down, you can adjust the extension in and out freely.
- 2 Adjust the extension to the desired size and release the buttons to lock the extension in place. Keep the extension free of dirt, sand, or debris. If exposed to these simply rinse with fresh water.



## CARING FOR YOUR WATCH

Your KIRBY MORGAN watch is a precision device, thus it requires appropriate care, both to protect your investment and to maintain good working order.

Daily activities, as well as normal sports activities, will not affect the integrity of the watch. A violent shock, such as a drop or impact may upset the movement, and the watch's ability to keep correct time, however.

Your watch should only be cleaned with water and a soft cloth.

Metal bracelets should be cleaned with a soft brush or cloth, warm

soapy water, rinsed clean and dried with a soft cloth.

If your watch is immersed in water on a regular basis, it should be inspected annually to verify water resistance.

If wearing your watch in salt water, thoroughly rinse the case and bracelet in fresh water when finished.

The maximum water resistance depth is engraved on the case back, or can be found on the dial. Never wind or pull out the crown when the watch is wet or underwater. The water resistance indicated is

tested at a static level of pressure. Underwater activities create additional pressures on the watch, which are greater than the normal or actual depth.

### Guidelines for water resistance

50 Meters / 5 ATM / 165 Feet  
*suitable for swimming*

100 Meters / 10 ATM / 330 Feet  
*suitable for swimming and snorkeling*

200 Meters / 20 ATM / 660 Feet  
*suitable for recreational scuba diving*

300 Meters / 30 ATM / 1000 Feet  
*suitable for professional diving*

Avoid wearing your watch in saunas and hot tubs, as the high temperatures can affect the watch's water resistance.

Avoid bathing or showering with your watch, as prolonged exposure to soap can reduce the watch's water resistance, over time.

## WARRANTY AND REFUNDS

KIRBY MORGAN backs our watches with a one year conditional warranty. This warranty covers defects in the build quality of the watch, including movement. This excludes the strap, and normal wear and tear.

Further, the warranty does not cover damage to the watch from water leaking into the case due to an unsecured crown.

KIRBY MORGAN reserves the sole right to determine whether a watch is covered under the conditional warranty.



[www.KIRBYMORGAN.com](http://www.KIRBYMORGAN.com)