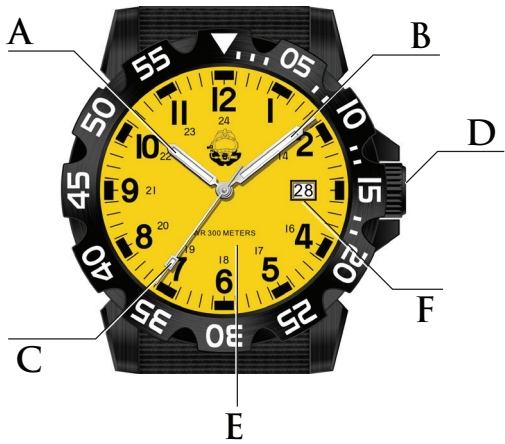


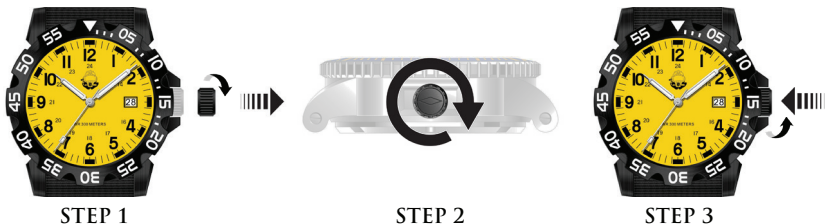
INSTRUCTIONS AND WARRANTY

ELEMENTS OF THE WATCH FACE



- A. HOUR INDICATOR HAND
- B. MINUTE INDICATOR HAND
- C. SECOND INDICATOR HAND
- D. CROWN
- E. WATCH DIAL
- F. DATE INDICATOR WINDOW

SETTING THE DATE



STEP 1: TO SET THE DATE, UNSCREW THE CROWN COUNTER-CLOCKWISE UNTIL IT SPINS FREELY, THEN PULL THE CROWN OUT TO THE FIRST CLICK.

STEP 2: TURN THE CROWN CLOCKWISE TO ADVANCE THE DATE.

STEP 3: TURN THE CROWN CLOCKWISE WHILE APPLYING PRESSURE TOWARDS THE CASE, UNTIL SNUG.

SETTING THE TIME



STEP 1: UNSCREW THE CROWN COUNTER-CLOCKWISE UNTIL IT SPINS FREELY, THEN PULL THE CROWN OUT TO THE SECOND CLICK.

STEP 2: TURN THE CROWN CLOCKWISE (OR COUNTER-CLOCKWISE) TO THE APPROPRIATE TIME.

STEP 3: TURN THE CROWN CLOCKWISE WHILE APPLYING PRESSURE TOWARDS THE CASE, UNTIL SNUG.

CARING FOR YOUR WATCH

YOUR KIRBY MORGAN WATCH IS A PRECISION DEVICE, THUS IT REQUIRES APPROPRIATE CARE, BOTH TO PROTECT YOUR INVESTMENT, AND TO MAINTAIN GOOD WORKING ORDER.

DAILY ACTIVITIES, AS WELL AS NORMAL SPORTS ACTIVITIES, WILL NOT AFFECT THE INTEGRITY OF THE WATCH. A VIOLENT SHOCK, SUCH AS A DROP OR IMPACT MAY UPSET THE MOVEMENT, AND THE WATCH'S ABILITY TO KEEP CORRECT TIME, HOWEVER.

YOUR WATCH SHOULD ONLY BE CLEANED WITH WATER AND A SOFT CLOTH. REFRAIN FROM ALLOWING WATER TO COME IN CONTACT WITH LEATHER.

METAL BRACELETS SHOULD BE CLEANED WITH A SOFT BRUSH OR CLOTH, WARM SOAPY WATER, RINSED CLEAN AND DRIED WITH A SOFT CLOTH.

IF YOUR WATCH IS IMMERSSED IN WATER ON A REGULAR BASIS, IT SHOULD BE INSPECTED ANNUALLY TO VERIFY WATER RESISTANCE.

IF WEARING YOUR WATCH IN SALT WATER, THOROUGHLY RINSE THE CASE AND BRACELET IN FRESH WATER WHEN FINISHED.

CARING FOR YOUR WATCH (CONT.)

THE MAXIMUM WATER RESISTANCE DEPTH IS ENGRAVED ON THE CASE BACK, OR CAN BE FOUND ON THE DIAL. NEVER WIND OR PULL OUT THE CROWN WHEN THE WATCH IS WET OR UNDERWATER.

THE WATER RESISTANCE INDICATED IS TESTED AT A STATIC LEVEL OF PRESSURE. UNDERWATER ACTIVITIES CREATE ADDITIONAL PRESSURES ON THE WATCH, WHICH ARE GREATER THAN THE NORMAL OR ACTUAL DEPTH.

GUIDELINES FOR WATER RESISTANCE:

50 METERS / 5 ATM / 165 FEET - SUITABLE FOR SWIMMING

100 METERS / 10 ATM / 330 FEET - SUITABLE FOR SWIMMING AND SNORKELING

200 METERS / 20 ATM / 660 FEET - SUITABLE FOR RECREATIONAL SCUBA DIVING

300 METERS / 30 ATM / 1000 FEET - SUITABLE FOR PROFESSIONAL DIVING

AVOID WEARING YOUR WATCH IN SAUNAS AND HOT TUBS, AS THE HIGH TEMPERATURES CAN AFFECT THE WATCH'S WATER RESISTANCE.

AVOID BATHING OR SHOWERING WITH YOUR WATCH, AS PROLONGED EXPOSURE TO SOAP CAN REDUCE THE WATCH'S WATER RESISTANCE, OVER TIME.

WARRANTY AND REFUNDS

KIRBY MORGAN BACKS OUR WATCHES WITH A TWO YEAR CONDITIONAL WARRANTY. THIS WARRANTY COVERS DEFECTS IN THE BUILD QUALITY OF THE WATCH, INCLUDING MOVEMENT.

THIS EXCLUDES THE STRAP, AND NORMAL WEAR AND TEAR.

FURTHER, THE WARRANTY DOES NOT COVER DAMAGE TO THE WATCHES BY WATER LEAKING INTO THE CASE, DUE TO AN UNSECURED CROWN.

KIRBY MORGAN RESERVES THE SOLE RIGHT TO DETERMINE WHETHER A WATCH IS COVERED UNDER THE CONDITIONAL WARRANTY.

THE TRADITION OF INNOVATION CONTINUES



KIRBYMORGAN.COM