

# Kirby Morgan 37 Helmet P/N 500-050 / 500-051

Location #	Part #	Description
1	520-054	Visor
2	510-754	Head Cushion Assembly
	510-722	Head Cushion Bag
3	510-837	Head Cushion Foam Spacer Assembly (Order P/N 525-745)
	510-836	Head Cushion Foam Spacer Bag
4	510-683	Chin Cushion Assembly
	510-639	Chin Cushion Bag
5	505-024	Side Block Assembly (B)
	505-025	Side Block Assembly (B), Brass
6	520-033	O-ring, Teflon®
7	555-154	Bent tube Assembly, No O-rings
8	510-012	O-ring
9	555-155	Bent Tube Assem w/O-rings
10	560-125	Weight, Top
	560-116	Weight, Top, Brass
11	530-070	Screw
12	530-032	Screw
13	530-070	Screw
14	530-540	Washer
15	505-107*	Helmet Shell, 37 with Ring
16	530-078	Screw
17	530-540	Washer
18	530-527	Washer
19	530-078	Screw
20	560-133	Handle, 37
	560-136	Handle, Brass, 37
21	560-192	Plaque, 37
22	560-194	Handle with Plaque, 37
	560-195	Handle with Plaque, Brass 37
23	530-045	Screw
24	510-762	Air Train Gasket
25	530-050	Screw
26	530-535	Washer
27	530-415	Washer, Lock
28	530-317	Nut
29	545-016	Air Train
30	530-535	Washer
31	530-317	Nut
32	560-032	Weight, Port Side
	560-033	Weight, Port Side, Brass
33	530-062	Screw
34	530-052	Screw
35	530-035	Screw
36	550-062	Knob, Nose Block
	550-252	Knob, Nose Block, Brass

Location #	Part #	Description
37	555-180	Packing Nut
	555-190	Packing Nut, Brass
38	510-008	O-ring
	550-116	Nose Block Guide
39	550-249	Nose Block Guide, Brass
	560-070	Port Retainer, w/#39
40	560-071	Port Retainer, Brass, w/#39 Brass
41	510-010	O-ring
42	520-004*	Face Port
43	510-260	O-ring, View Port
44	530-015	Screw
45	505-110	Sealed Pull Pin
46	530-032	Screw
47	530-059	Screw
48	540-039	Front Stand Off
49	550-063	Body, Water Dump
50	510-561	Valve, Water Dump, Black
51	510-033	O-ring
52	520-042	Tie Wrap
53	530-019	Screw
54	510-007	O-ring
55	560-530	Cover, Water Dump Adapter
56	505-111	Chin Strap Assembly Purchase 525-716 Kit
57	510-786	Starboard Whisker Wing
58	510-760	Quad Valve Exhaust Main Body
59	520-042	Tie Wrap
60	520-200	Whisker Exhaust Valve Insert
61	510-776	Exhaust Valve
62	520-118	Tri/Quad Valve Whisker Clamp
63	530-008	Brass Screw
64	530-009	Brass Nut
65	510-787	Port Whisker Wing
66	505-730	Quad Valve Exhaust Assembly
67	530-045	Screw
68	550-061	Spacer
69	540-015	Kidney Plate
70	505-069	SuperFlow® 350 Regulator Assembly Purchase 525-771 Kit
71	530-546	Washer for Swing Catch
72	530-035	Screw
73	550-061	Spacer
74	540-086	Swing Catch
75	520-167	Teflon® Washer for Swing Catch
76	535-825	Spring, Swing Catch

Location #	Part #	Description
77	530-045	Screw
78	550-122	Spring Spacer
79	505-119	Neck Ring Assembly (neoprene) Med.
80	530-545	Washer
81	530-028	Lock Nut
82	560-111	Locking Collar
83	550-113	Adjustment Nut, Neck Pad
84	520-098	Neck Pad
85	530-064	Screw
86	550-045	T-Washer
87	530-027	Hinge Bolt
88	520-165	Washer
89	320-026	Comm. Mount Nut
90	515-029	Microphone Assembly
91	515-019	Earphone, Left, 15.5"
92	515-018	Earphone, Right, 9"
93	515-024	Comm. Assembly w/MWP
94	515-023	Comm. Assembly w/Posts
95	510-575	Nose Block Pad
96	545-015	Nose Block Device <i>Includes location #95</i>
97	520-020	Valve Body
98	510-550	Valve, Oral Nasal
99	510-747	Oral Nasal Mask
100	550-081	Nut, Regulator Mount
101	510-490	O-ring
102	540-054	Earphone Retainer
103	530-519	Washer
104	530-018	Screw
105	530-702	Snap
106	530-527	Washer
107	530-031	Screw

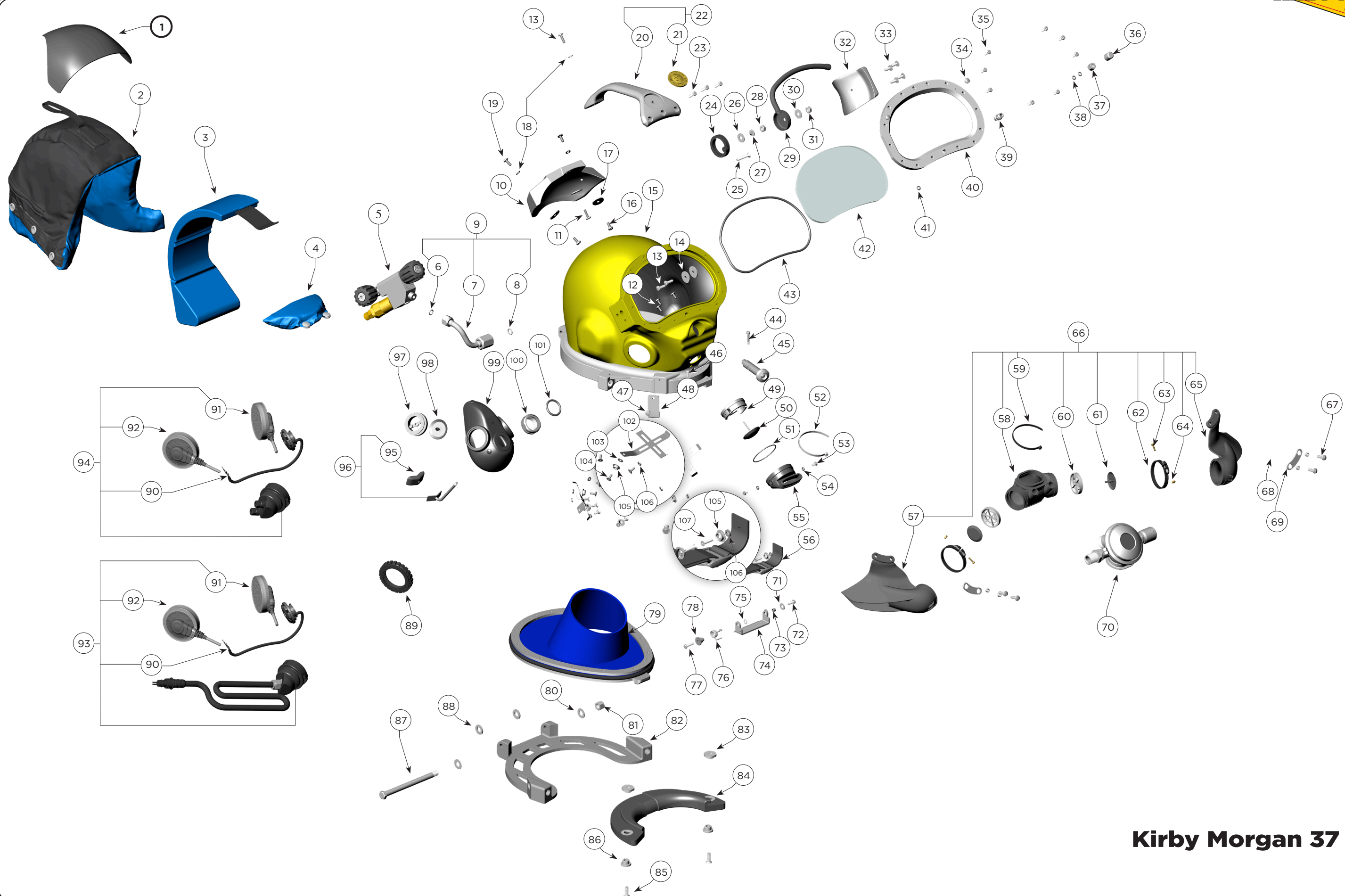
## ⚠ CAUTION

**Use only Kirby Morgan original replacement parts. The use of other manufacturers' parts will interfere with the performance characteristics of your life support equipment and may jeopardize your safety. Additionally, any substitutions will void any warranties offered by KMDSI. When ordering spares, always insist on Kirby Morgan original parts.**

\* Denotes a critical component



**Kirby Morgan Dive Systems, Inc.** 1430 Jason Way, Santa Maria, CA 93455  
 Phone: (805) 928-7772 Fax: (805) 928-0342  
[www.KirbyMorgan.com](http://www.KirbyMorgan.com) e-mail: [kmdsi@KirbyMorgan.com](mailto:kmdsi@KirbyMorgan.com)



**Kirby Morgan 37 Helmet**