

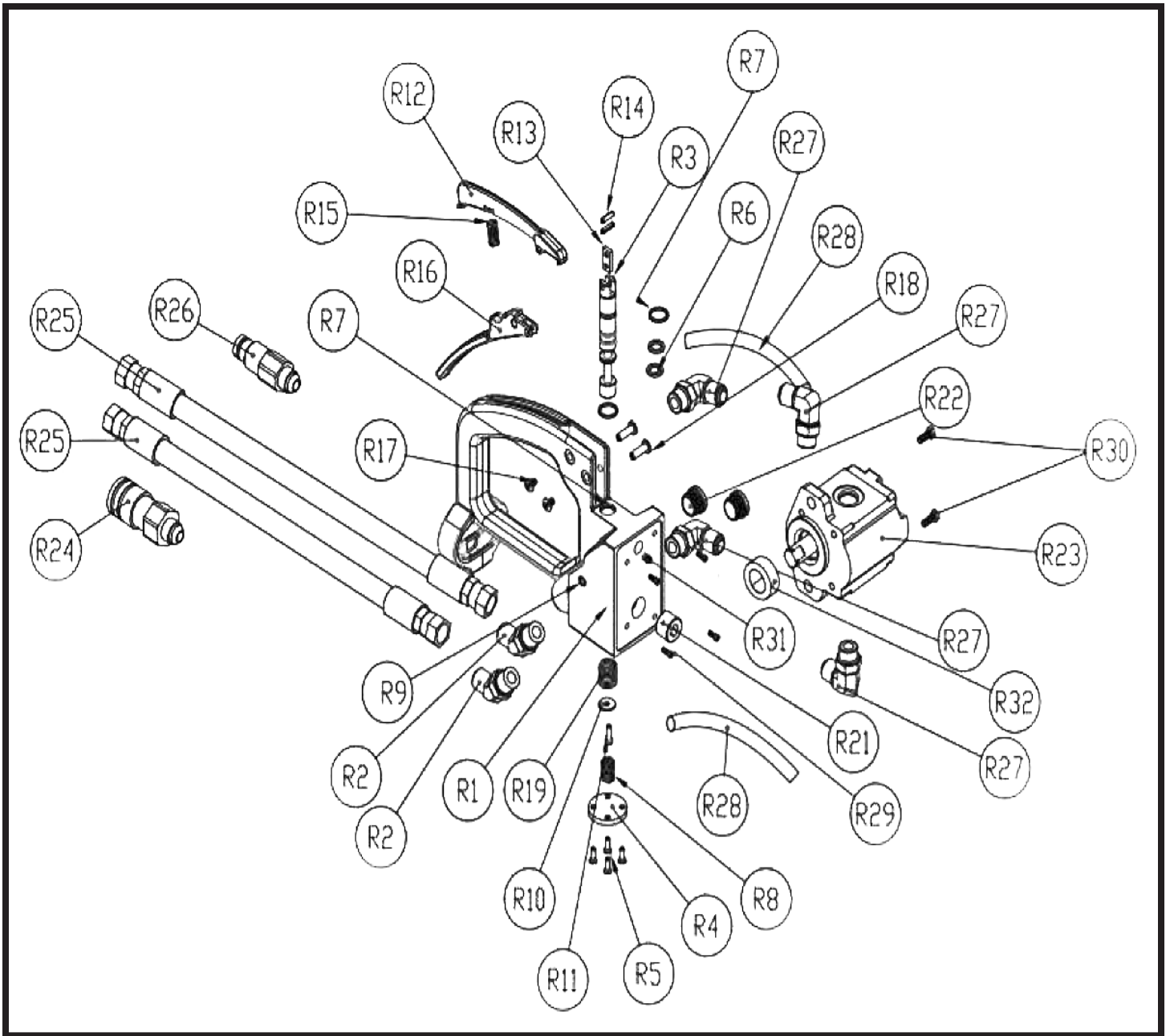


# QTH 12 Chain Saw Parts List

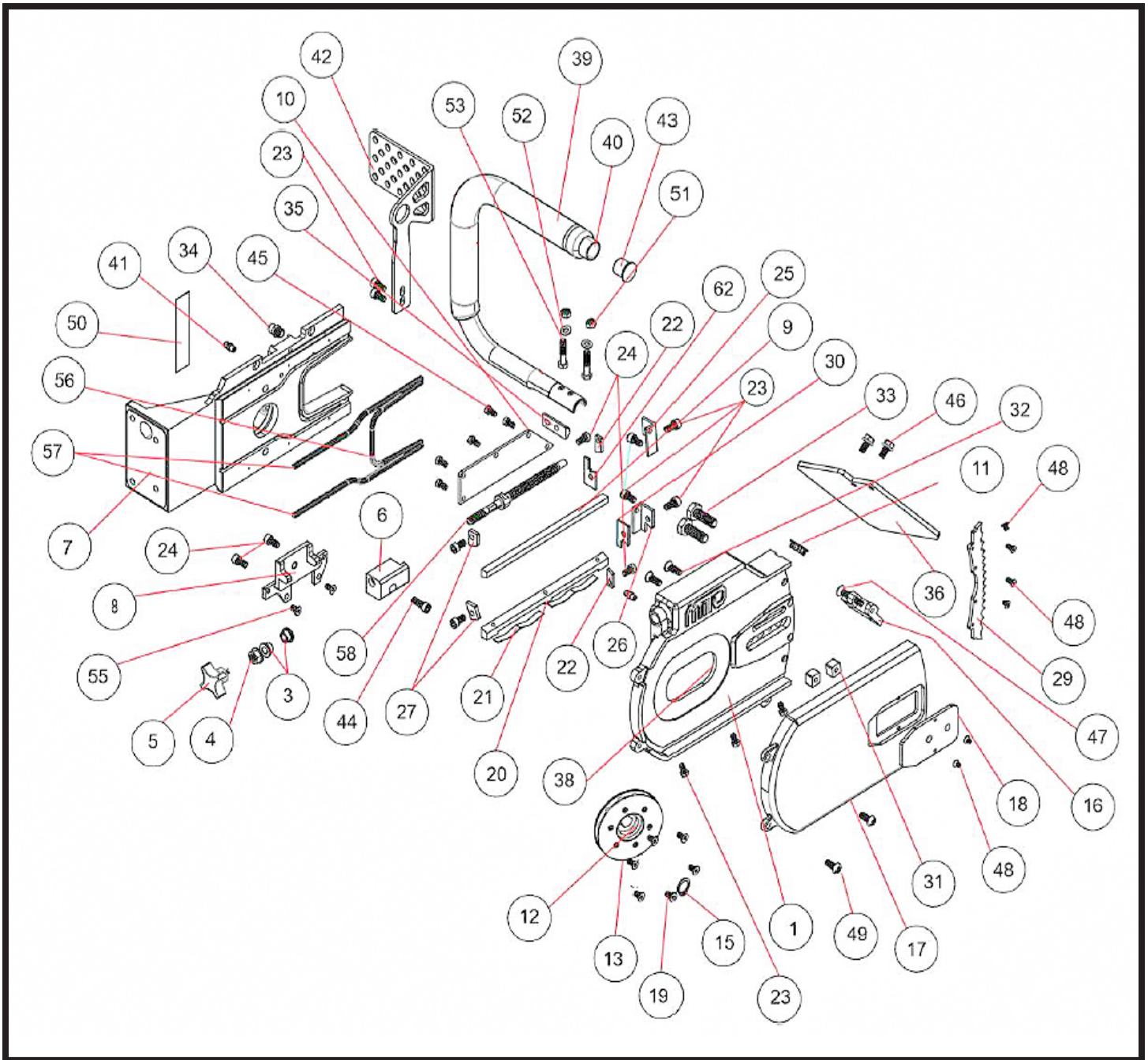


9876 Pflumm Road  
Lenexa, KS. 66215  
Toll Free: 866-688-1032  
Local: 816-246-5515  
web: DITEQ.COM

Revision Date  
May 2020



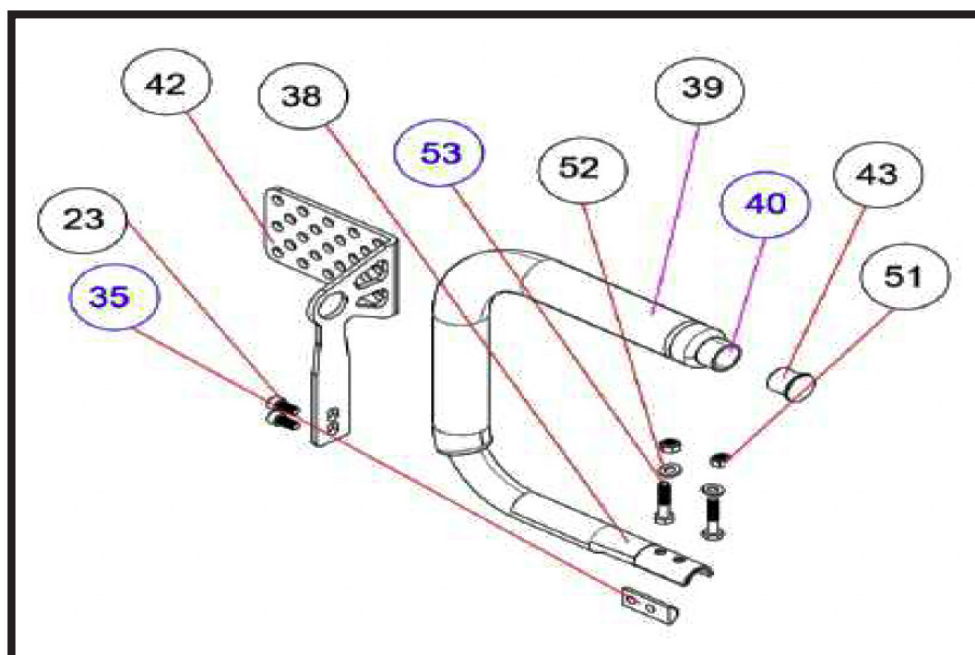
<b>Item Number</b>	<b>Description</b>	<b>Qty Used</b>	<b>P/N:</b>
R1	Handle	1	5050419
R2	Adapter 45 D 3/4" 4	2	141563
R3	Spool 3	1	141549
R4	Spool Cover 3	1	141551
R5	Screw FH 8-32 X 1/2 Phil 3	1	5811928
R6	Innwr Quadring 6	4	7484628
R7	Outerquadring 4	2	140805
R8	Outer Spool Spring 3	1	141543
R9	Plug	2	141553
R10	SPOOL RETAINER 3	1	141550
R11	SCREW SHCS 8-32 x 1/211 3	1	900177
R12	TRIGGER LOCK 3	1	141541
R13	TRIGGER / SPOOL LINK 3	1	141548
R14	ROLL PIN 5/32 x 5/8 3	2	141548
R15	TRIGGER LOCK SPRING 3	1	140896
R16	TRIGGER 3	1	141540
R17	TRIGGER & LOCK SKREW SET (2 PCS) 4	2	140872
R18	-	-	-
R19	INNER SPOOL SPRING 3	1	141542
R20	-	-	-
R21	BRONZE PLUG	2	141560
R22	ALLUMINIUM PLUG	2	5616803
R23	MOTOR 12 GPM	1	140858
R24	COUPLING MALE	1	140753
R25	HYDR HOSE WIPI/2"	2	140755
R26	COUPLING FEMALE	1	140754
R27	ADAPTER 90 D 3/4"	1	5804684
R28	HYDR TUBE PRESSURE & RETURN	2	6050905
R29	SHCS 1/4-20 x 3/4"	5	5806317
R30	SHCS 3/8 16 x 3/4"	1	5806101
R31	WATER HOSE ADAPTER 1/4 slip on tube X 1/4 NPTM	1	5650911
R32	MOTOR SHAFT FELT GASKET 1/2 x 1-1/411 x 1/4"	1	140760



Item Number	Description	Qty Used	P/N:
1	Main body - Bar Holder	1	141450
2	RGC motor oreassembled oart	1	A3MOOI075
3	Main screw Brass bushina	2	141452
4	M8 Flanged nut	1	A3M00402I
5	MB Threaded Knob	1	141410
6	QT Barrel, bronze	1	141455
7	Base Support - Motor Plate	1	A3M00100I
8	Nut Bracket (New Pennon)	1	A3M00400I
9	Upper bronze slide	1	141461
10	Main Screw Box Cover	1	141453

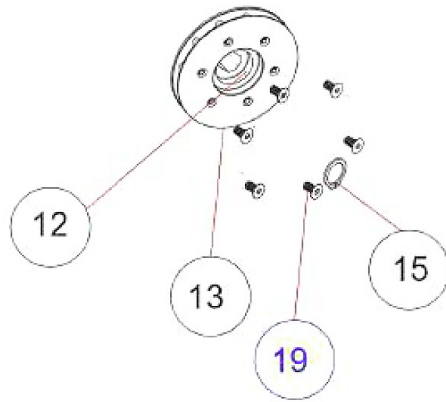
Item Number	Description	Qty Used	P/N:
11	Metal Round Plua for pannel	1	141474
12	Sprocket Body 1543 QTHU ZI2	1	A3M004013
13	Dia 82 mm Sprocket Flanae	1	A3M004014
14	M4x6 FHCS	6	A3M004024
15	Seeaer 0.588" move D.09"	1	141497
16	Bracket Mud Flap	1	141457
17	Main side Cover	1	141404
18	Bar Clamp Flange (cover)	1	141456
19	M4 x 10 SHCS	6	A3M001056
20	Lower bronze Rail	1	A3M00102I
21	Wave Spring I mm th ... mm	2	141472
22	Frnnt Bronze bar stopper	2	A3M004003
23	N\6x10 SHCS	7	A3M001070
24	M6x 12 LSHCS	4	A3M004029
25	Upper Front Seal Locker	1	A3M004002
26	Lower Front Seal Locker	1	A3M004006
27	Back Bronze slide stopper		A3M004004
28	-	-	-
29	Tiger Grip	1	141405
30	Front Lower back scraper	1	A3M004009
31	Bar Holder BLOCK	2	141465
32	M6x22 SHCS	2	A3M004030
33	M10x30 HHCS	2	A3M00403I
34	Water Connection Plug	1	141470
35	Handle screw bushing	1	141471
36	Mud Flap	1	141409
37	-	-	-
38	OR MAIN BODY BAR HOLDER	1	141408
39	Yellow pipe corruaated cover	1	141466
40	Handle	1	
41	Grease nipple M6x I	2	141458
42	Handle Link Guitar + protection	1	A3M00104I
43	Rubber Cup Handle 00 22, 10 19	1	141467
44	M6xI5 SHCS	1	A3M00107I
45	M5xI0 HHCS	5	A3M004036
46	M6xI2 FHHCS	2	A3M004037
47	M6x35 FHCS	1	A3M004038
48	M4X6 FHCS	2	A3M004039
49	M6xI6 SHCS	2	910197
50	-	-	-
51	M6 locknut	2	A3M00404I

Item Number	Description	Qty Used	P/N:
52	M6 X 12 STEEL washer	2	A3M004042
53	M6x30 HHCS	2	A3M004039
54	M4X6 FHCS	2	A3M004043
55	M5x10 FHCS	2	A3M004044
56	OR Cord C shaped front	1	141468
57	OR Cord shoood T.B.	2	141469
58	Main scew	1	A3M001010
62	Front Upper back scraper	1	A3M004011



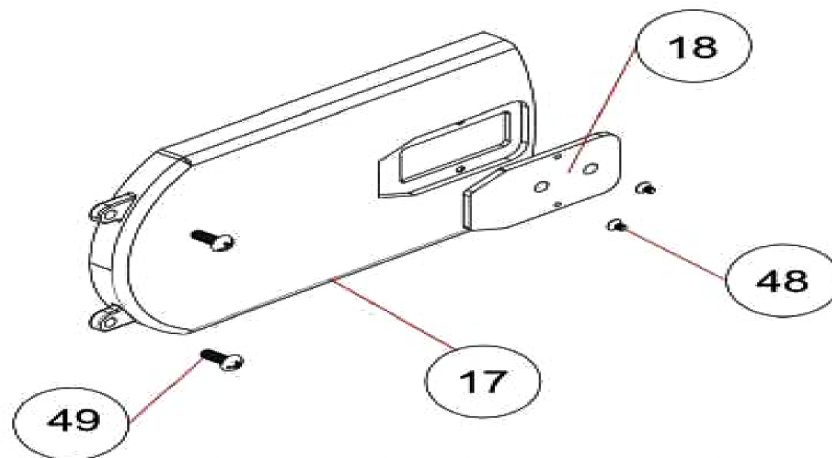
Item Number	Description	Qty Used	P/N:
23	M6x 10 SHCS	7	A3M001070
35	Handle screw bushing	1	141471
39	Yellow pipe corruaated cover	1	141466
40	Handle	1	A3M001046
42	Handle Link Guitar + protection	1	141407
43	Rubber Cup Handle OD 22. ID 19	1	141467
51	M6 locknut	2	A3M004041
52	M6 X 12 STEEL washer	2	A3M004042
53	M6x30 HHCS	2	A3M004039

## A3S004002 - Sprocket Z12



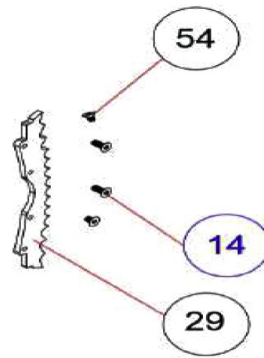
Item Number	Description	Qty Used	P/N:
12	Sprocket Body 1543 QTHU Z 12	1	A3M004013
13	Dia 82 mm Sprocket Flange	1	A3M004014
15	Seeger 0.588" groove D.09"	1	141497
19	M4 x 10 SHCS	6	A3MOOI056

## A3S004003 - Main Side Cover



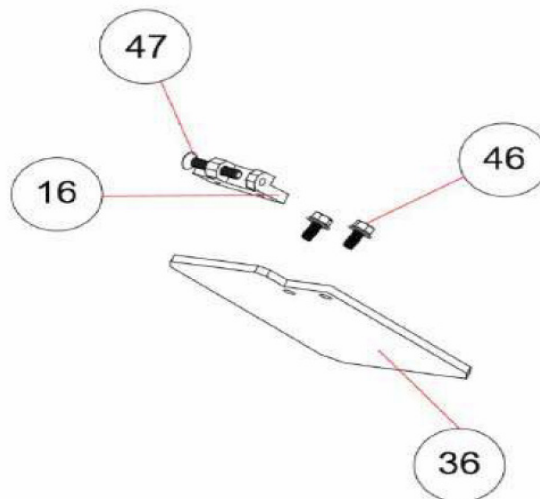
Item Number	Description	Qty Used	P/N:
17	Main side Cover	1	141404
18	Bar Clamp Flange (cover)	1	141456
48	M4X6 FHCS	2	A3M004039
49	M6x16 SHCS	2	910197

## A3S004004 - Tiger Grip



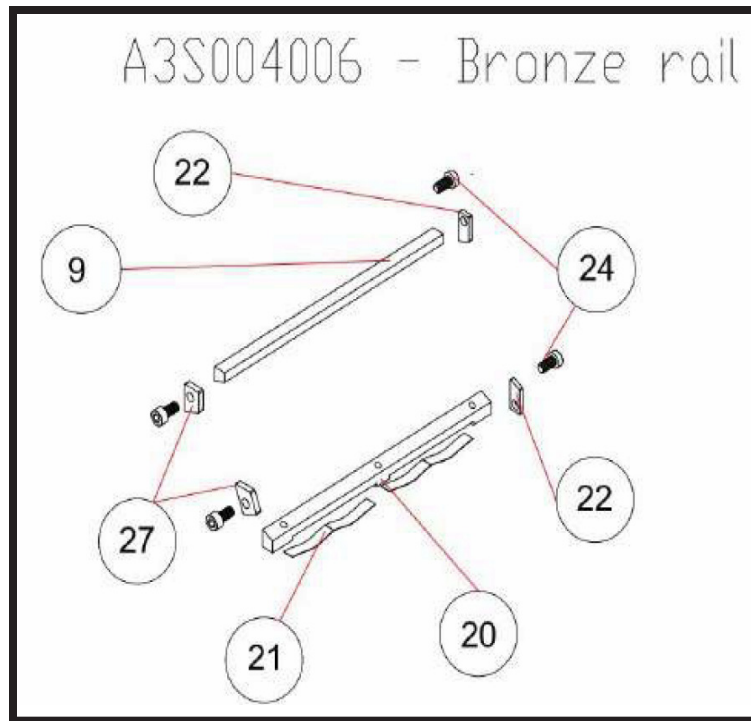
Item Number	Description	Qty Used	P/N:
14	M4x6 FHCS	6	A3M004024
29	Tiger Grip	1	141405
54	M4X6 FHCS	2	A3M004043

## A3S004005 - Mud Flap

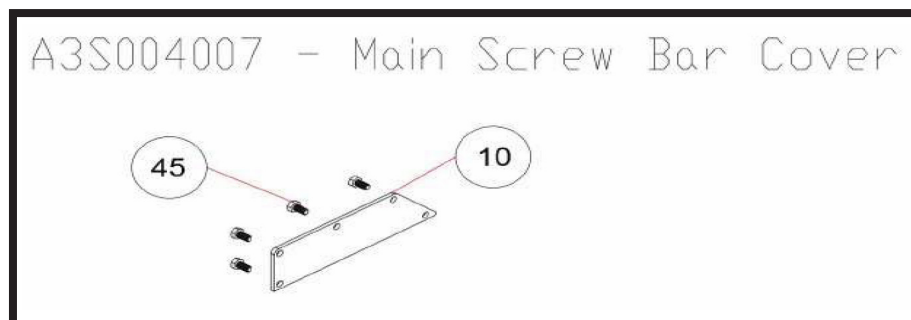


Item Number	Description	Qty Used	P/N:
16	Bracket Mud Flap	1	141457
36	Mud Flap	1	141409
46	M6x12 FHHCS	2	A3M004037
47	M6x35 FHCS	1	A3M004038

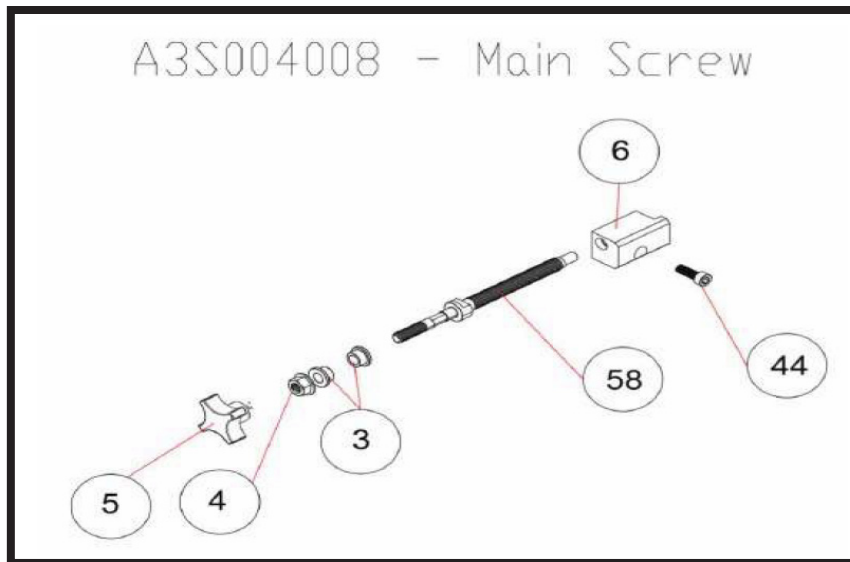




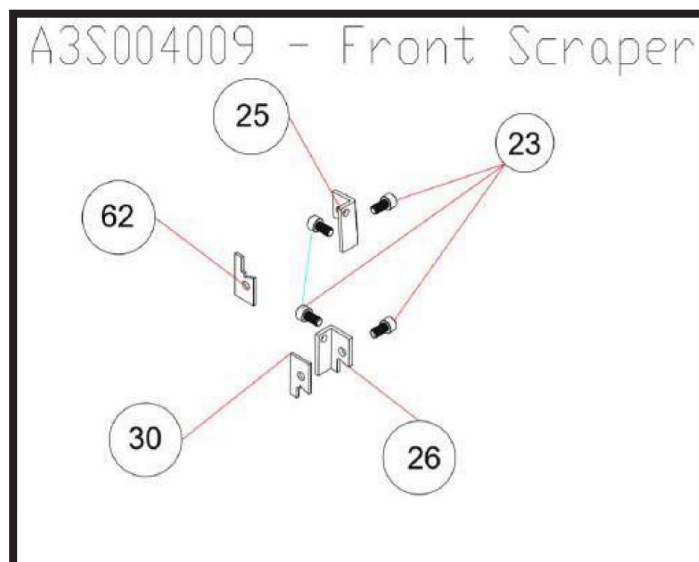
Item Number	Description	Qty Used	P/N:
9	Upper bronze slide	1	141461
20	Lower bronze Rail	1	141417
21	Wave Spring 1 mm th ... mm	2	141472
22	Front Bronze bar stopper	2	A3M004003
24	M6x12 LSHCS	4	A3M004029
27	Back Bronze slide stopper	2	A3M004004



Item Number	Description	Qty Used	P/N:
10	Main Screw Box Cover	1	A3M001005
45	M5x10 HHCS		A3M004036



Item Number	Description	Qty Used	P/N:
3	Main screw Brass bushing	2	A3M004020
4	M8 Flanaed nut	1	141452
5	M8 Threaded Knob	1	A3M004022
6	QT Barrel, bronze	1	141455
44	M6xI5 SHCS	1	A3M001071
58	Main scew	1	141406

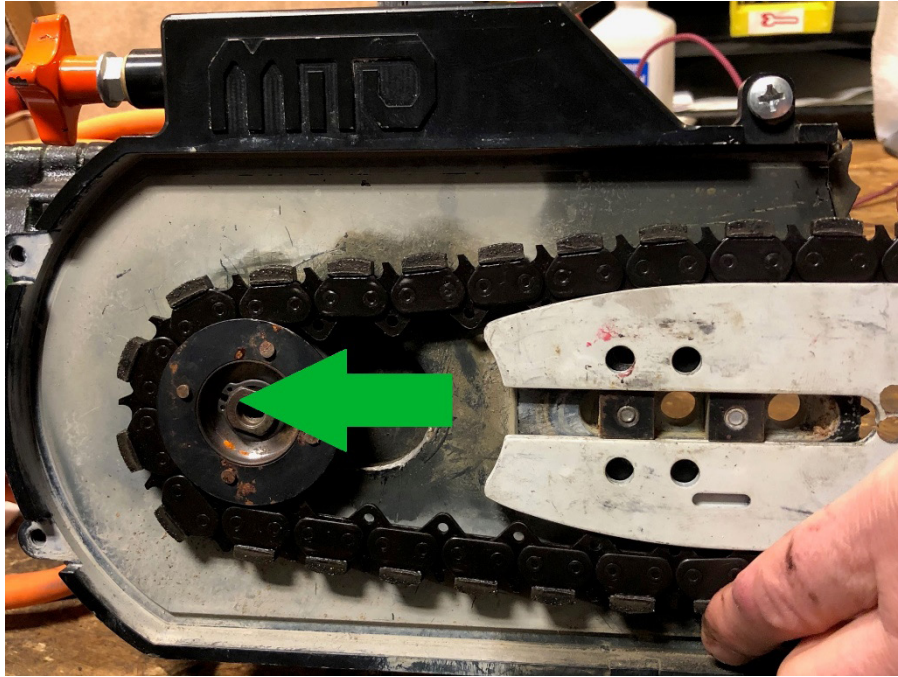


Item Number	Description	Qty Used	P/N:
23	M6xI0 SHCS	4	A3M001070
25	Upper Front Seal Locker	1	A3M004002
26	Lower Front Seal Locker	1	A3M004006
30	Front Lower back scraper	1	A3M004009
62	Front Uooer back scraper	1	A3M004011

## ⇒ Procedure to re-arm and DOUBLE the machine tensioning stroke

The machine is equipped with a QT stroke exceeding 1.50" , which usually allows plenty of stroke to exhaust the chain without touching the bar – however – should the chain need additional stroke to compensate stretch – an easy procedure allows to extend (double) the QT stroke

The re-arming of the mechanism requires 3 steps.



### **STARTING CONDITION :**

QT is fully retracted ( +1.50" ) – can no longer compensate for chain stretch  
Needs to be re-armed in order to provide additional chain tensioning capability

→ COVER IS CLOSED (removed in this picture to illustrate status underneath)



### STEP 1

Bring home the QT – sprocket travels back toward the bar (RED arrow)  
Chain becomes very loose

→ MACHINE COVER REMAINS CLOSED (no need to be removed)



### STEP 2

Release cover – bar becomes loose enough to slide – do not remove the cover completely  
Manually move the BAR outside (Green Arrow) until chain slack almost disappear – no need to tension the chain properly ( bring it out as much as you can then go back inside 1/4")



### **STEP 3**

You are done!

Clamp firmly the cover which is securing the bar firmly

Move QT to establish desired chain tensioning

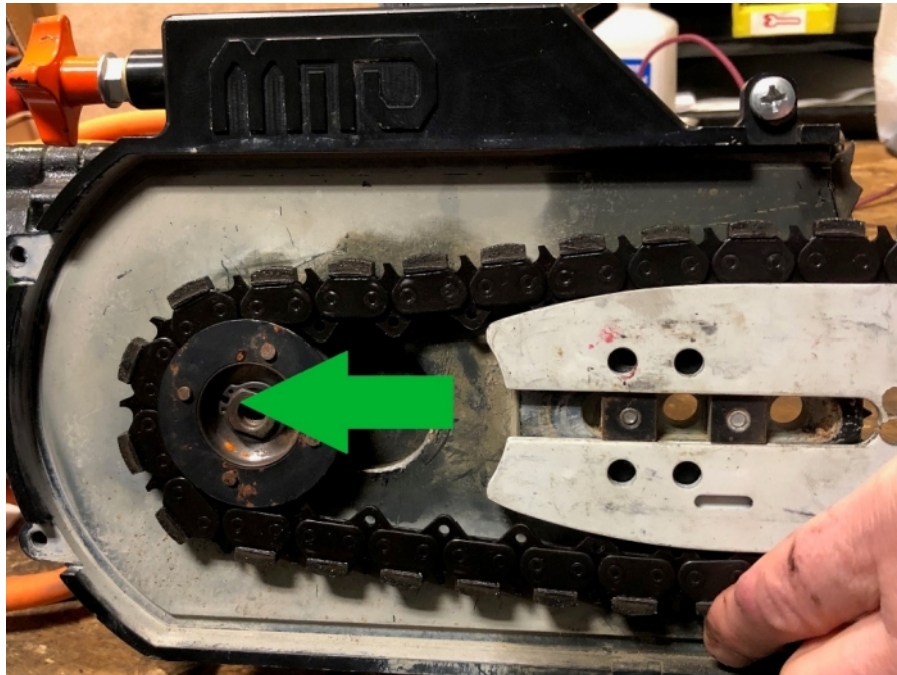
You are ready to run and have an additional 1.50" of adjustment

→ *CAREFUL, a chain that underwent the entire first round of QH adjustment (circa 1.50") is structurally weaker than a new chain. Operate with additional care*

**⇒ Procedure to re-arm and DOUBLE the machine tensioning stroke**

The machine is equipped with a QT stroke exceeding 1.50" , which usually allows plenty of stroke to exhaust the chain without touching the bar – however – should the chain need additional stroke to compensate stretch – an easy procedure allows to extend (double) the QT stroke

The re-arming of the mechanism requires 3 steps.

**STARTING CONDITION :**

QT is fully retracted ( +1.50" ) – can no longer compensate for chain stretch  
Needs to be re-armed in order to provide additional chain tensioning capability

➔ COVER IS CLOSED (removed in this picture to illustrate status underneath)



### STEP 1

Bring home the QT – sprocket travels back toward the bar (RED arrow)  
Chain becomes very loose

➔ MACHINE COVER REMAINS CLOSED (no need to be removed)



## STEP 2

Release cover – bar becomes loose enough to slide – do not remove the cover completely  
Manually move the BAR outside (Green Arrow) until chain slack almost disappear – no need  
to tension the chain properly ( bring it out as much as you can then go back inside ¼")





### STEP 3

You are done!

Clamp firmly the cover which is securing the bar firmly

Move QT to establish desired chain tensioning

You are ready to run and have an additional 1.50" of adjustment

→ *CAREFUL*, a chain that underwent the entire first round of QH adjustment (circa 1.50") is structurally weaker than a new chain. Operate with additional care